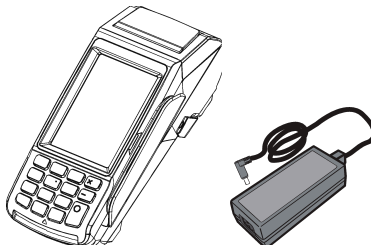


Castles Vega 3000 2.4" Countertop with Contactless Basic Specifications

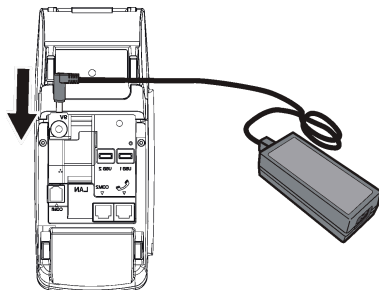
Dimensions	190mm(L) x 78mm(W) x 78mm(H)		
Environment	Temperature	Operation	0C to 50C
		Storage	-20C to 70C
	Humidity	Operation	5% to 90% non-condensing
		Storage	5% to 95% non-condensing
Power Supply	DC 9V/4A		

In the box



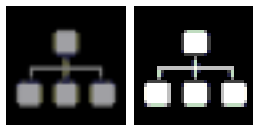
- CASTLES V3 Terminal
- CASTLES Switching Power Adapter
- AC Power Cord
- Paper Roll

Connecting the Power Supply



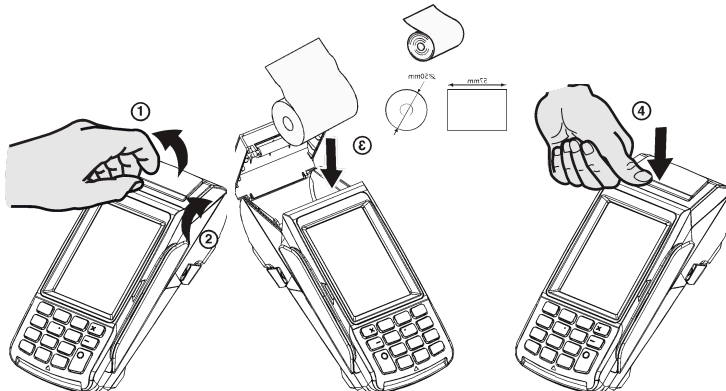
1. Plug AC power cord into AC outlet
2. Plug AC power cord into CASTLES switching power adapter
3. Plug power adapter into 9V power port on back of terminal

Connecting Ethernet



Connect Ethernet cord to LAN port on back of terminal

Installing Paper Roll



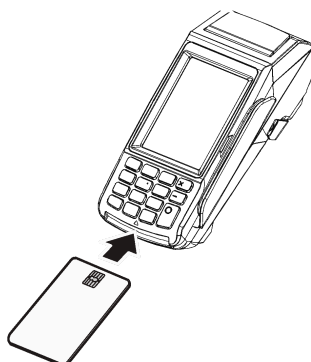
1. Open the printer cover by pulling up on the release tab on the top
2. Hold the roll of paper with the leading end pointing to the back of the terminal
3. Place paper roll in cradle
4. Close printer cover with excess paper lead out

Powering On and Off

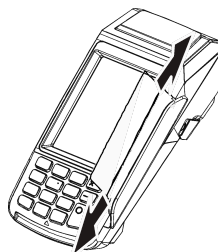


If power button is enabled (to power off); hold down the power button or unplug power source from the back of the device
If power button is enabled (to restart); holding down the power button will restart the device.
To power fully down, unplug power source from the back of the device
If power button is disabled; unplug power source from back of device

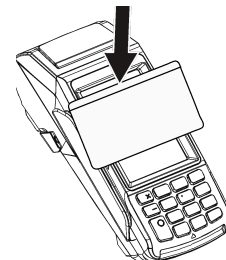
Transaction types:



EMV / Chip Card



Swipe



Mobile Payment / Contactless

Caution-

- Do not leave terminal in direct sunlight, inside vehicles or any other source of heat.
- Avoid exposure to heat and water
- Do not attempt to eat terminal. It is not delicious.
- Avoid close proximity to other devices using magnetic devices or similar frequencies
- Risk of explosion if battery is replaced by an incorrect type. Dispose used batteries according to the instructions.

Federal Communication Commission Interference Statement

This device complies with Part 15 of the FCC Rules. Operation is subject to the following two conditions: (1) This device may not cause harmful interference, and (2) this device must accept any interference received, including interference that may cause undesired operation.

This equipment has been tested and found to comply with the limits for a Class A digital device, pursuant to Part 15 of the FCC Rules. These limits are designed to provide reasonable protection against harmful interference in a residential installation. This equipment generates, uses and can radiate radio frequency energy and, if not installed and used in accordance with the instructions, may cause harmful interference to radio communications. However, there is no guarantee that interference will not occur in a particular installation. If this equipment does cause harmful interference to radio or television reception, which can be determined by turning the equipment off and on, the user is encouraged to try to correct the interference by one of the following measures:

- Reorient or relocate the receiving antenna.
- Increase the separation between the equipment and receiver.
- Connect the equipment into an outlet on a circuit different from that to which the receiver is connected.
- Consult the dealer or an experienced technician for help.

FCC Caution: Any changes or modifications not expressly approved by the party responsible for compliance could void the user's authority to operate this equipment.

This transmitter must not be co-located or operating in conjunction with any other antenna or transmitter.

Radiation Exposure Statement:

This device complies with the FCC portable RF exposure limit set forth for an uncontrolled environment and is safe for intended operation as described in this manual. The further RF exposure reduction can be achieved if the product can be kept as far as possible from the user body or set the device to lower output power if such function is available.